

**THE IMAGINE SERIES**

The Imagine

**5024**

**27' x 60'**

DIMENSIONS

**1,600** sf

LIVING SPACE

**3**

BEDROOMS

**2**

BATHROOMS

**OVERVIEW**

Mid/Larger 3 Bed + 2 Bath doublewide. Customize with optional Den in place of 3rd bedroom for flexibility and optional island in Kitchen. All bedroom have Walk-in closet.

Heritage Home Center

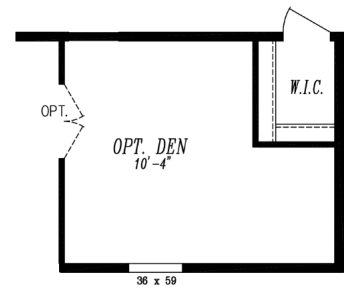
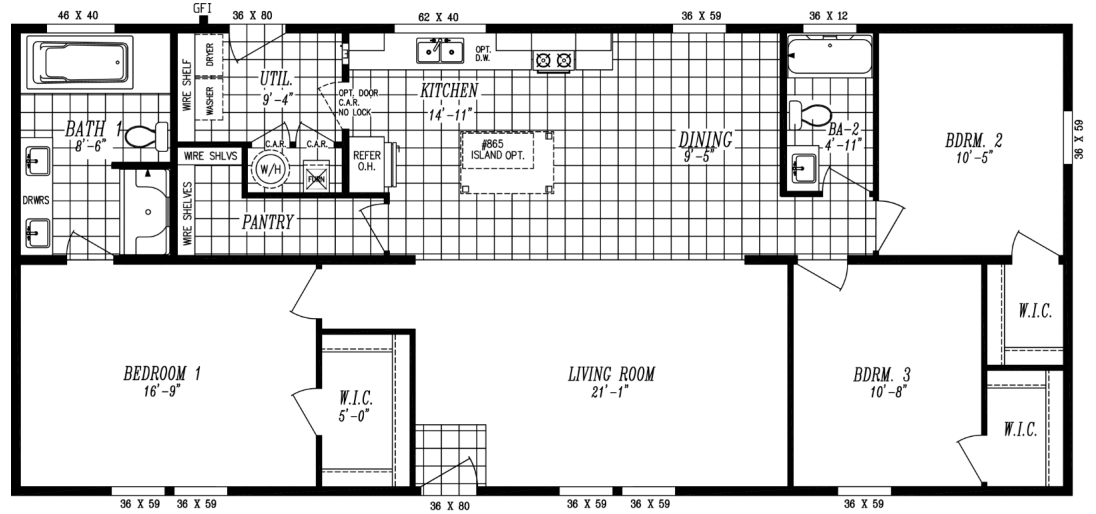
**(425) 353-5464**

or **Request Firm Quote**

EMAIL US

**01 FLOOR PLAN**

1,600 SQ FT · 27' x 60'

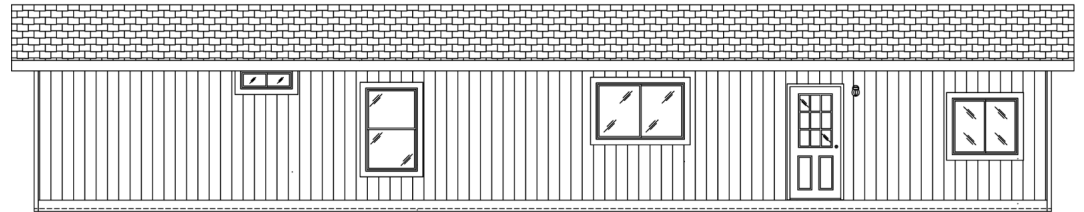


OPT. DEN I.P.O BEDROOM 3

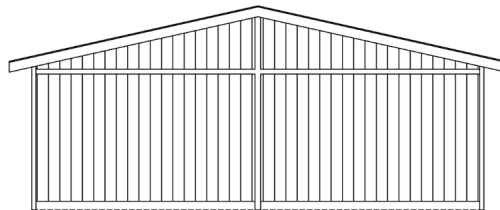
**02 FRONT ELEVATION**



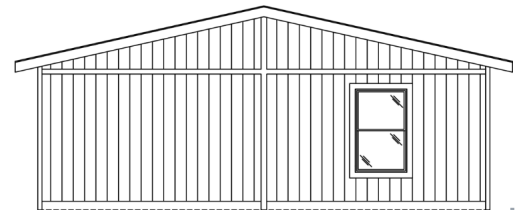
FRONT SIDEWALL



REAR SIDEWALL



REAR ENDWALL



FRONT ENDWALL

# The Imagine 5024

3 Bedrooms | 2 Bathrooms | 1,600 sq ft

## STANDARD FEATURES

- ✓ Energy Star Rating
- ✓ LP SmartSide Panel Siding with 5/50 Year Warranty
- ✓ Standard Deluxe Bath 1 with 6' Deck Tub and 60" Fiberglass Double Bench Seat Walk In Shower
- ✓ 2x6 Exterior Wall Studs
- ✓ Wood Cased Windows w/Flat Trim
- ✓ Rheem 50 Gallon Water Heater
- ✓ 4 Standard Can Lights in Living Room and Family Room
- ✓ Rounded Drywall Corners
- ✓ Samsung Kitchen Appliances

## MOST POPULAR UPGRADES

- ✓ 80 Lb. Roof Load for high snow areas
- ✓ Cement Board Lap Siding
- ✓ 20' Open Face Dormer
- ✓ 27.4 Side by Side Refrigerator
- ✓ Self Clean, Smooth Top Convection Range
- ✓ Above Range Microwave with Cabinets
- ✓ Energy Star Dishwasher
- ✓ 2" Blinds
- ✓ Wood Shelving in Closets and Pantries
- ✓ 8# Carpet Pad
- ✓ 9' Flat Ceiling with Enlarged Windows

**Heritage Home Center**

Washington's Price and Volume Leader

**(425) 353-5464**

CALL TO TOUR

[Request Firm Quote](#)

EMAIL US

Features/specs subject to change.